



# Minnesota Paint Stewardship Program Update – Year 2

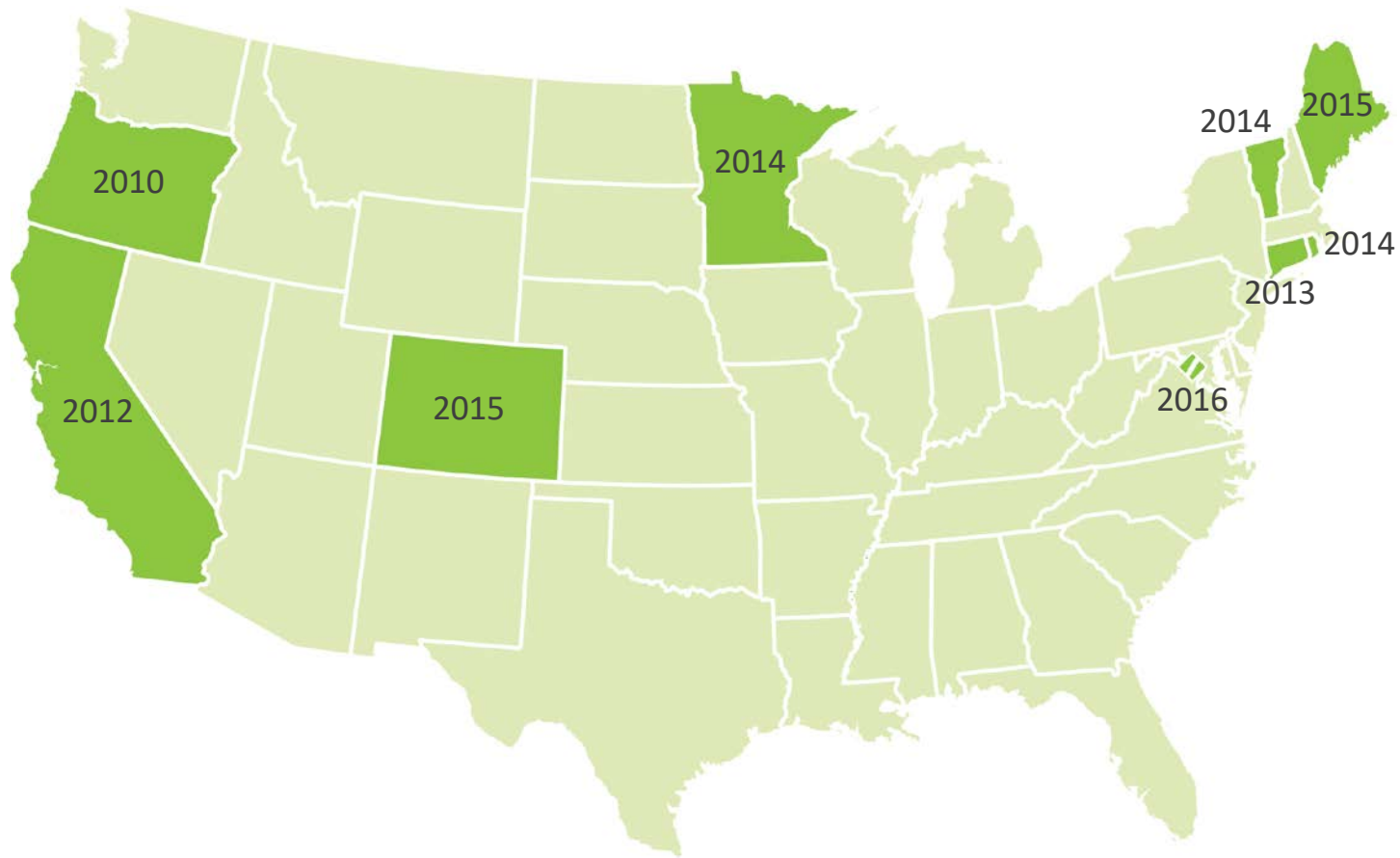
*Steve Pincuspy*

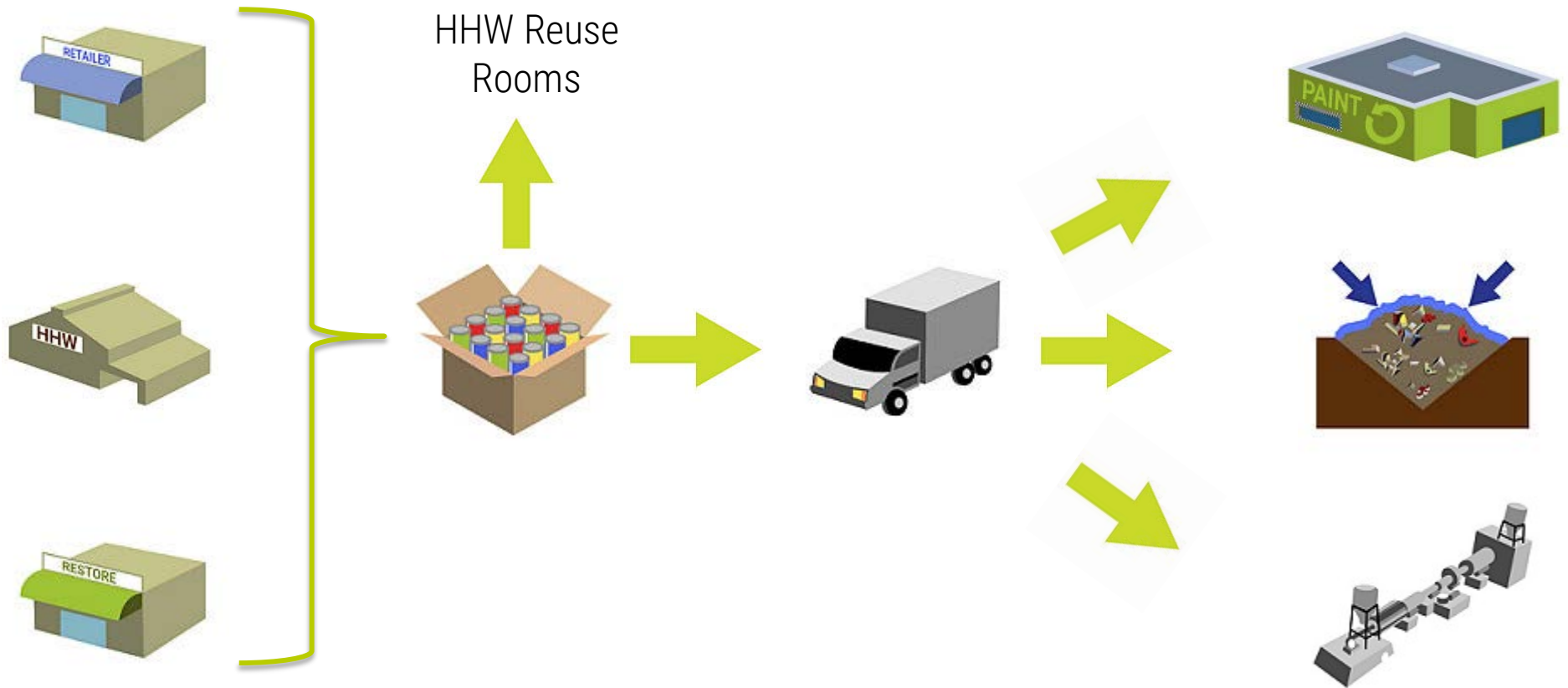
*November 16, 2016*

*Webinar*



*Paint Stewardship Program – Architectural Coatings*





*What happens to the paint?*

# Overview

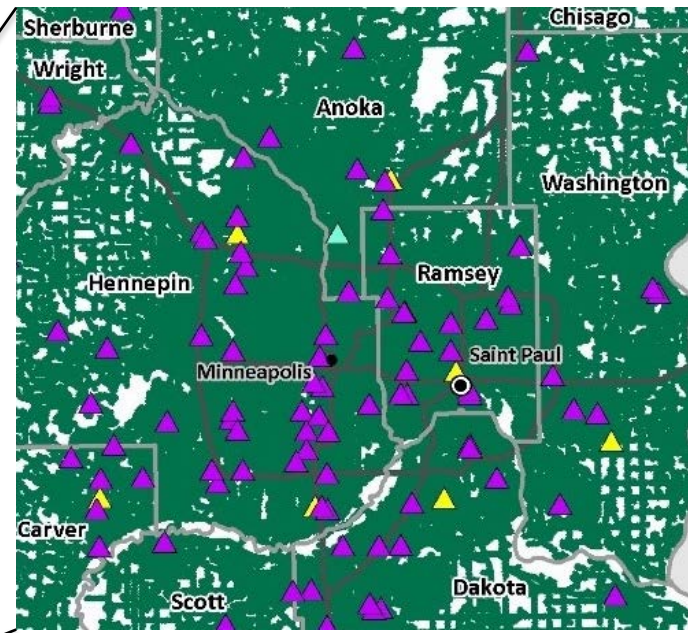
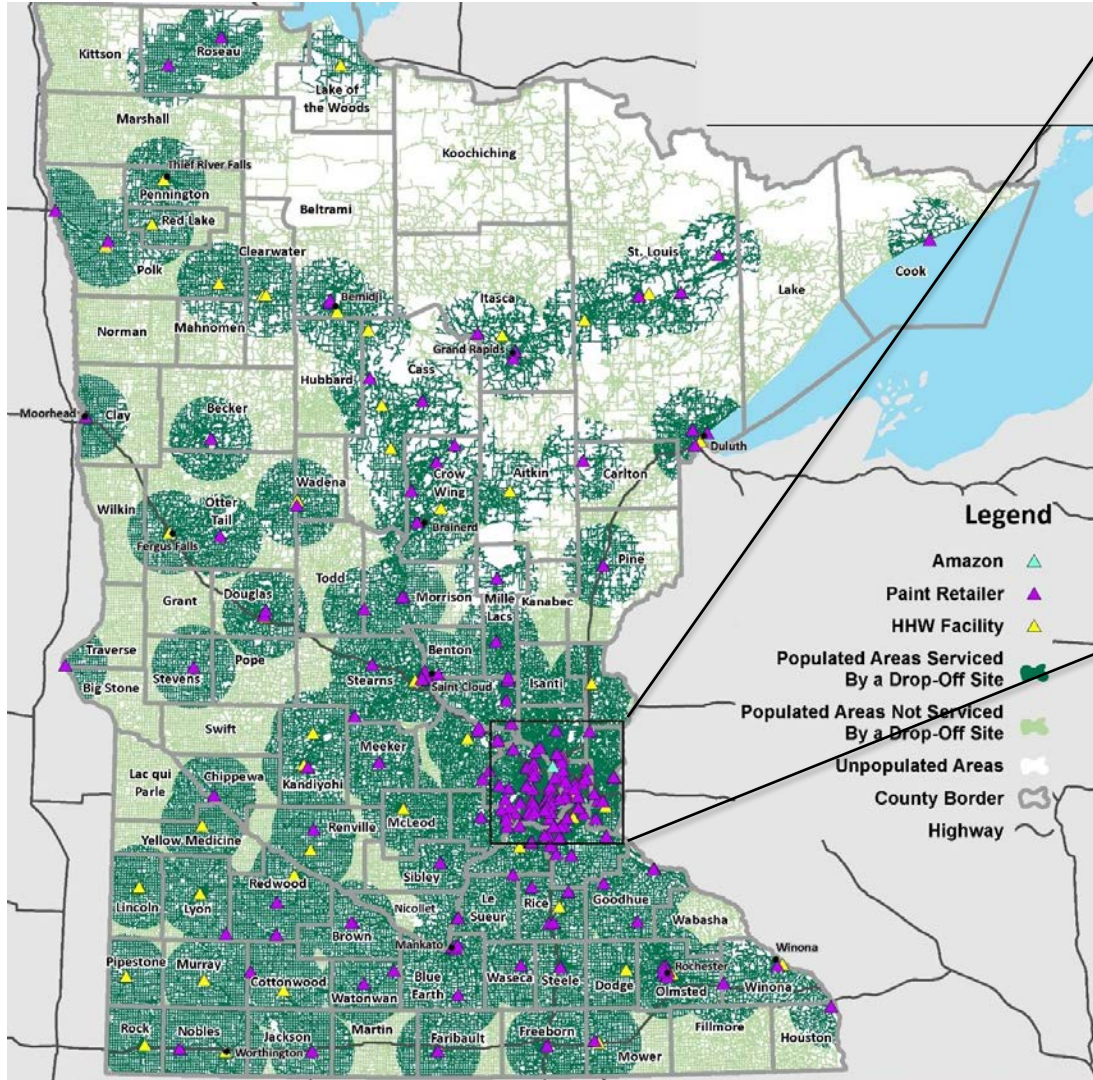
- 246 year-round drop-off Sites
  - 196 PaintCare sites
  - 50 HHW sites
- Supplemental Collection
  - 14 Seasonal HHW
  - 63 Large volume pickups
  - 243 HHW events
  - 2 Partial-year retailers
- 1.2 million gallons recovered and processed
  - 77% Latex
  - 23% Oil based
- \$2,928,269 - Minnesota HHW reimbursement
- 93.3% of MN residents w/in 15 miles of year-round location

# Year-Over-Year Comparison

	FY 2015*	FY 2016
Year-Round Drop-off Sites	218	246
Gallons Recovered	501,400	1,022,346
Recovery Rate	9.6%	11.1%
Service Area**	92.3%	93.3%

\* 8 months only.

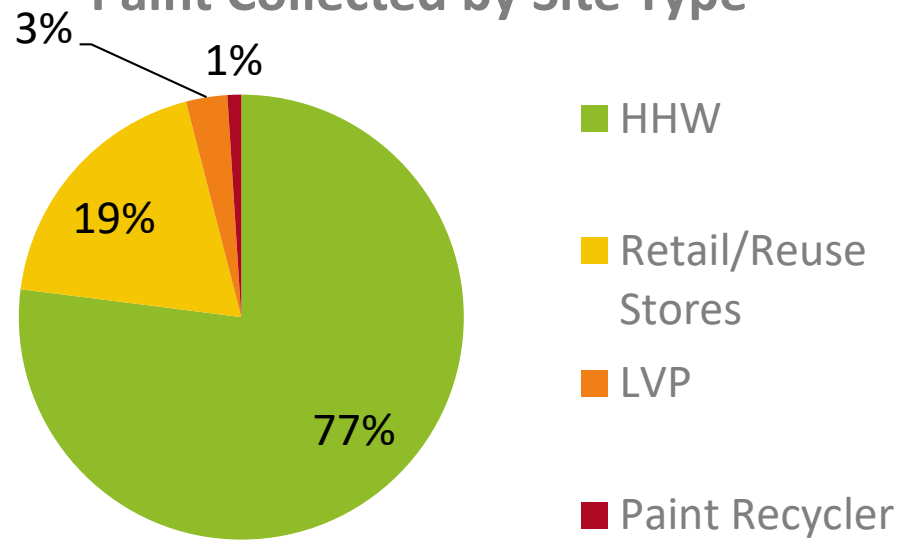
\*\* Percent of MN residents within 15 miles of a drop-off site.



*Year-round Drop-off sites*



## Paint Collected by Site Type



*Pictures from top to bottom:*

- *Typical retail drop-off site bin*
- *Packaged material at an LVP site*
- *Reuse room at an HHW*



# Paint Disposition

- Highest reuse rate among PaintCare states
- 548 tons of paint containers were recycled
- 43% of latex delivered to recycler was made into paint

	FY2015			FY2016	
LATEX PAINT	GALLONS	%	GALLONS	%	
Reuse	46,966	12	96,754	12	
Recycled Paint	143,977	36	297,490	38	
Fuel	13,804	4	0	0	
Alternative Daily Landfill Cover	191,054	48	393,796	50	
Disposal	0	0	11	0	
Total	395,801	100	788,051	100	

OIL-BASED PAINT	GALLONS	%	GALLONS	%	
Reuse	9,665	9	20,567	9	
Fuel	95,934	91	213,728	91	
Total	105,599	100	234,295	100	

# Outreach

- 9190 brochures, 2675 mini-cards, and 1668 fact sheets distributed
- 71 print advertisements and 8 circulars promoting PaintCare drop-off sites
- Over 42,000 website visits
- Two local TV news segments
- Online radio ads

## PAINT RECYCLING MADE *easy*



### Do you know where to recycle your paint?

There are more than 235 PaintCare sites in Minnesota where households and businesses can recycle unwanted paint, stain and varnish all year-round, including these sites in Rochester:

**ARROW ACE HARDWARE**  
905 37th Street NW  
(507) 218-3006

**HIRSHFIELDS**  
420 Crossroads Drive SW  
(507) 285-9594

**OLMSTED COUNTY HHW FACILITY**  
305 Silver Creek Road NE  
(507) 328-7070  
Mon - Fri 8 am - 5 pm\*

*\*This facility also accepts other types of hazardous waste from residents and businesses. Contact facility for details. Businesses must contact the county and complete an application form prior to using the facility.*

**ARROW ACE HARDWARE**  
1500 N Broadway Avenue  
(507) 282-0095

**SHERWIN-WILLIAMS**  
1970 36th Avenue NW  
(507) 289-2647



### TO FIND OTHER DROP-OFF LOCATIONS:

[www.paintcare.org](http://www.paintcare.org)

(855) 724-6809

*All PaintCare sites accept up to 5 gallons per visit (some take more). Please call ahead to confirm business hours and ask if they can accept the type and amount of paint you would like to recycle. Sites do not accept: aerosols (spray paint) or leaking, unlabeled and empty containers.*

# Financials

## REVENUE

	FY2015	FY2016
Total revenue	3,124,672	5,432,831

## EXPENSES

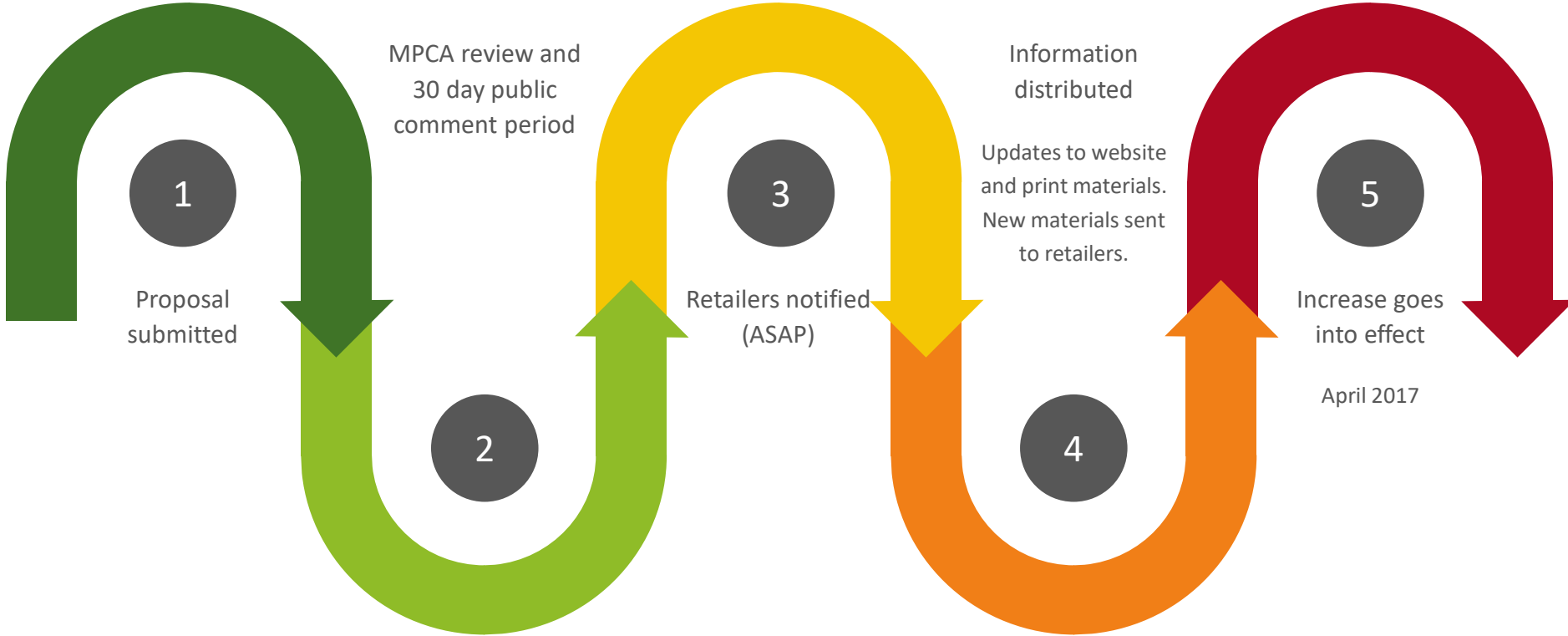
Paint processing	1,838,138	3,852,169
Paint transportation	307,875	465,386
Collection supplies and support	228,008	419,737
Communications	756,574	375,324
Personnel, professional fees, and other	235,962	148,333
State administrative fees	87,046	118,013
Allocation of corporate activity	170,111	375,240
Total expenses	3,623,714	5,754,202
Allocation of investment activity	(3,331)	(25,217)
Change in net assets (revenue minus expenses)	(502,373)	(346,589)
Net assets, beginning of reporting period	(647,114)	(1,149,487)
Net assets, end of reporting period	(1,149,487)	(1,496,076)

# Proposed Fee Increase

- Since the program began(November 2014), costs have been higher than the fee-based revenues used to operate the program.
- More than 1.5 million gallons of leftover paint collected to date. We anticipate the collection growth for the next few years.
- PaintCare submitted a proposed fee increase on the sale of paint, stain and varnish on November 14, 2016.

Container Size	Proposed
Half pint or smaller	\$ -
Larger than half pint to smaller than 1 gallon	\$ 0.49
1 gallon up to 2 gallons	\$ 0.99
Larger than 2 gallons up to 5 gallons	\$ 1.99

- Effective date: April 1, 2017





Steve Pincuspy  
MN Program Manager



612-719-5216



[spincuspy@paint.org](mailto:spincuspy@paint.org)