

Oregon Paint Stewardship Program



June 12, 2020
Oregon DEQ
Annual Stakeholder Meeting



Overview

2019 Results

- Paint collected
- Collection system
- Program finances
- Outreach
- 2020: the year in progress

10 Years of Paint Stewardship in Oregon



Paint Collected

- Paint-to-Paint recycling increased from 54% to 64%
- Reuse continued to increase
- 4% decrease in volume managed, decrease mainly due to changes at Marion County facility



Paint Management

LATEX PAINT DISPOSITION	2016 GALLONS	2016 %	2017 GALLONS	2017 %	2018 GALLONS	2018 %	2019 GALLONS	2019 %
Reuse	30,829	5	31,739	5	36,050	5	34,550	6
Paint-to-Paint	354,419	59	332,494	53	341,018	54	392,544	64
Cement Products	0	0	0	0	75,777	12	0	0
Biomass	2640	<1	2,993	<1	933	<1	0	0
Biodegradation	215,109	35	257,317	41	182,949	29	189,331	30
Total Latex	602,997	100	624,543	100	636,727	100	616,425	100

OIL-BASED PAINT DISPOSITION

Reuse	10,222	6	11,104	6	8,266	5	13,499	9
Energy Recovery	150,934	94	175,097	94	150,793	95	137,164	91
Total Oil-Based	161,156	100	186,201	100	159,059	100	150,663	100

Grand Total	764,153	810,744	795,786	767,088
-------------	---------	---------	---------	---------

Collection System

Requirements

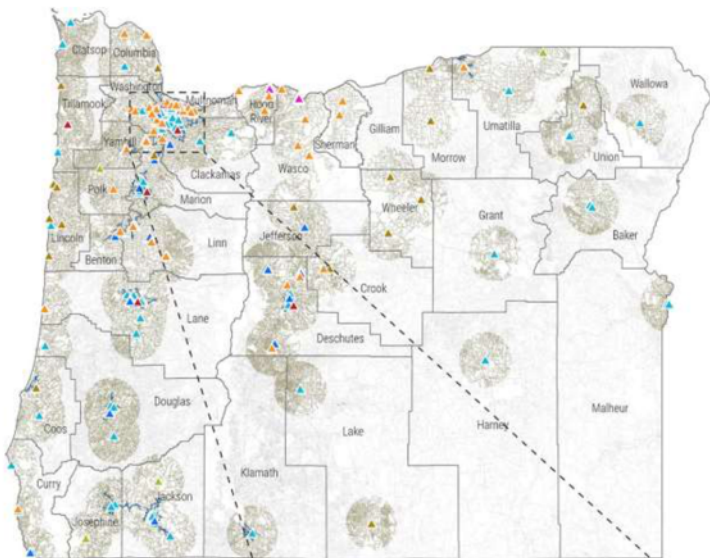
- **Density:** one permanent collection site for every 30,000 residents.
 - **175 permanent sites, one for every 21,892 residents** as of 12/31/19
- **Distribution:** one permanent site within 15 miles for 95% of the state's residents.
 - **96.7%** of residents live within 15 miles of a permanent drop-off site as of 12/31/19



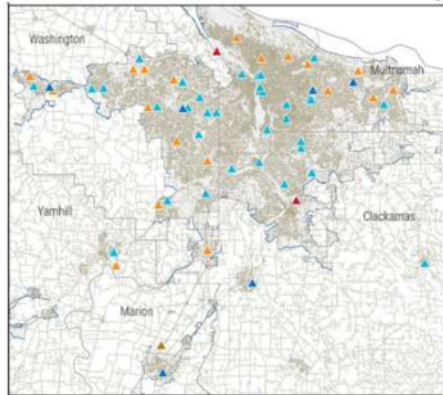
Sites, Events and Services

SITE TYPE	2016	2017	2018	2019	%
HHW & Solid Waste Facilities	22	26	27	28	16%
Paint Retailers	124	124	119	121	69%
Reuse Stores	25	27	26	26	15%
Total Permanent Sites	171	177	172	175	100%

EVENTS & LARGE VOLUME PICK-UPS	2016	2017	2018	2019	SITES
PaintCare-Sponsored Events	5	6	8	4	4
HHW/Municipal-Sponsored Events	65	75	72	64	42
Large Volume Pick-Ups	20	35	49	43	39
Recurring Large Volume Pick-Up Sites	7	7	10	10	10



Portland Metro Area



- ▲ HHW Event
- ▲ HHW Facility
- ▲ HHW Seasonal Facility
- ▲ PaintCare Event
- ▲ Retail
- ▲ Reuse Store
- ▲ Solid Waste Facility
- ▭ County Borders
- ▭ Urbanized Areas (Population 30,000 or more)
- ▭ Population Served by Drop-Off Sites
- ▭ Population Not Served by Drop-Off Sites

175 permanent sites

96.7% within 15 miles of a permanent site

Permanent sites + 42 event sites

98.1% within 15 miles of a permanent site or event



Shady Cove drop-off event

June 1, 2019

Paint-only Events

Held in 2019:

- Shady Cove
- Cave Junction
- Milton-Freewater
- Willamina

Fewer PaintCare events in 2019 due to addition of local HHW services and retail sites. Events are always planned in consultation with local contacts.



Program Finances

- Paint sales declined slightly, but fee revenue increased with full year of new fee structure
- Program expenses reduced slightly, in line with collection volume
- Return to positive net asset balance



2019 Program Finances

	2018	2019	Change + (-)
Revenue from fees	\$4,901,931	\$5,669,810	\$767,879
Expenses	\$4,982,713	\$4,674,473	(\$308,240)
Operations	\$4,423,035	\$4,126,197	(\$296,838)
Communications	\$67,674	\$40,950	(\$26,724)
DEQ Administration Fee	\$50,000	\$40,000	(\$10,000)
Administrative Costs	\$442,004	\$467,326	\$25,322
Change in net assets	(\$80,782)	\$995,337	\$1,076,119

2020 Budget

	2020 Budget	2019 Actual	Change +(-)	
Revenue	\$5,802,438	\$5,669,810	\$132,628	
Expenses	\$5,030,516	\$4,674,473	\$356,043	% of total
Operations	\$4,374,000	\$4,126,197	\$247,803	87%
Communications	\$100,000	\$40,950	\$59,050	2%
DEQ Administration Fee	\$40,000	\$40,000	-	1%
Administrative	\$516,516	\$467,326	\$49,190	10%
Change in net assets	\$771,922	\$995,337	(\$223,415)	
Net assets, end of year	\$977,543	\$205,621		

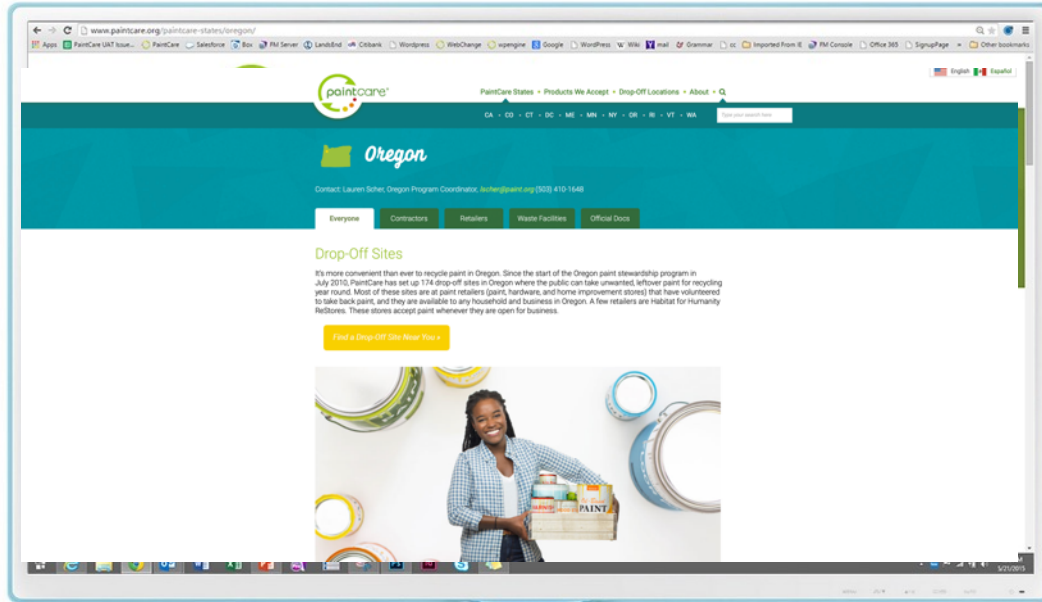
Note: Communications and administrative budget increases are focused on meeting requirements contained in program plan for source reduction, public awareness and cost effectiveness. Operations includes collection, processing, transportation and collection support.

Outreach

- Website: paintcare.org
 - Oregon specific information
 - Site locator
- Event Promotion
- Point of Sale Materials
- Signs and Window Clings
- Social Media



PaintCare's Website



PaintCare's Site Locator

Drop-Off Locations

Find a Drop-Off Site

About the Site Locator

Products We Accept

How to Recycle

If your device allows us to identify your location, the map will show drop-off sites near you. If you do not see a local map, please enter your zip code or address.

PaintCare is currently testing a new version of its Site Locator. **If you have any problems using the PaintCare Site Locator, please [click here to try an alternate version](#).**

If you're still having trouble, let us know by sending an email with your zip code to Paul Fresina at pfresina@paint.org.

97062

ENTER: Zip Code OR City, State OR Street Address

1	Sherwin-Williams Tualatin, OR 1.28 miles away	☎ (503) 691-0500 📍 Get Directions
2	Sherwin-Williams Lake Oswego, OR 5.07 miles away	☎ (503) 908-0959 📍 Get Directions
3	Sherwin-Williams Sherwood, OR 5.26 miles away	☎ (503) 625-7850 📍 Get Directions
4	Rodda Paint Beaverton, OR 6.75 miles away	☎ (503) 644-6188 📍 Get Directions
5	Miller Paint Lake Oswego, OR 8.47 miles away	☎ (971) 204-0007 📍 Get Directions

Google

Map data ©2020 Google Terms of Use Report a map error

- 📍 accepts up to 5 gallons
- 📍 accepts up to 10-20 gal.
- 📍 accepts up to 100 gal.
- 📍 HHW Programs (accepts other items)
- 📍 Also has Reuse Program

Event Promotion



We'll take your old paint!



ONE DAY ONLY

IT'S FREE!

Paint Drop-Off Event for Households and Businesses in the Milton-Freewater Area

DATE & TIME: Saturday, August 4, 2018
8 am - 12 pm

LOCATION: Humbert Recycling
54841 Highway 332
Milton-Freewater, OR 97862



WHAT PAINT PRODUCTS CAN YOU BRING?

You may bring most types of paint, stain, and varnish. Businesses that generate less than 220 pounds (about 20-30 gallons) of hazardous waste per month may bring any amount of latex or oil-based paint. Businesses that generate more than 220 pounds of hazardous waste per month may bring any amount of latex paint, but oil-based paint will not be accepted.

WE ACCEPT

Containers must have original manufacturer labels.

This event is for the following products only:

- House paint and primers (latex or oil-based)
- Stains
- Deck and concrete sealers
- Clear finishes (e.g., varnishes, shellac)

WE CAN'T ACCEPT

- No leaking, unlabeled or empty containers
- No aerosol spray paints
- No drums or containers larger than 5 gallons
- We cannot accept other hazardous waste or chemicals, such as paint thinner, solvents, motor oil, spackle, glue, adhesive, roofing tar, pesticides, cleaning chemicals

Recycle with PaintCare

Paint manufacturers created PaintCare, a non-profit organization, to set up convenient places for you to recycle leftover paint. We have set up drop-off sites throughout Oregon where you can take smaller amounts of paint all year long. To learn more or find a year-round PaintCare drop-off site near you, visit www.paintcare.org or call (855) 724-6809



Signs and Window Clings



Paint Recycling Program

About the Oregon PaintCare Program

PAINTCARE

Paint manufacturers created PaintCare, a non-profit organization, to set up convenient places for households and businesses to recycle leftover paint. PaintCare sets up paint drop-off sites throughout states that adopt paint stewardship laws.

PAINTCARE PRODUCTS

These products have fees when purchased and will be accepted for free at PaintCare drop-off sites:

- Latex house paints (acrylic, water-based)
- Oil-based house paints (alkyd)
- Stains
- Primers and undercoaters
- Shellacs, lacquers, varnishes, urethanes
- Deck and floor paints
- Sealers and waterproofing coatings for wood, concrete and masonry

NON-PAINTCARE PRODUCTS

- Paint thinners and solvents
- Aerosol paints (spray cans)
- Auto and marine paints
- Paint additives, colorants, tints, resins
- Wood preservatives (containing pesticides)
- Asphalt, tar and bitumen-based products
- 2-component coatings
- Coatings used for Original Equipment Manufacturing or shop application
- Any non-coatings (caulk, spackle, cleaners, etc.)

FEES

Fees are effective as of October 1, 2018.

PaintCare fees are applied to the purchase price of architectural paint sold in the state as required by state law. Fees are applied to each container and vary by the size of the container as follows:

Half pint or smaller	\$ 0.00
Larger than half pint and smaller than 1 gallon	\$ 0.45
1 gallon up to 2 gallons	\$ 0.95
More than 2 gallons up to 5 gallons	\$ 1.95

For more information or to find a place to take your unwanted paint for recycling, please ask for the PaintCare brochure, visit www.paintcare.org or call (855) 724-6809.



OR-PIEN-0518

Recycle with PaintCare



Recycle your paint here.

[DURING BUSINESS HOURS ONLY]

ACCEPTABLE

- Latex house paint
- Oil based house paint
- Primer
- Stains and sealers
- Varnish and shellac
- All brands

NOT ACCEPTABLE

- Paint thinner
- Two-component paints
- Aerosols
- Other chemicals

PLEASE DON'T BRING CONTAINERS THAT ARE

- Leaking
- Unlabeled
- Empty

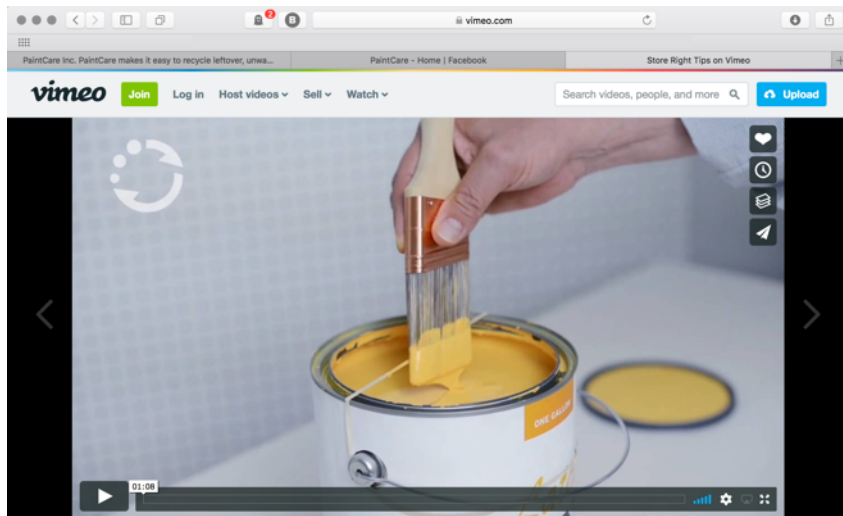


Recycle with PaintCare

For a complete list of acceptable products, please ask for the PaintCare brochure, call (855) 724-6809 or visit www.paintcare.org.



Social Media



Store Right Tips

2 years ago

PaintCare [+ Follow](#)

▶ 5,927 ❤️ 0 🗨️ 0 💬 2

[Share](#)

An unopened can of paint can last for decades if it is stored in a dry, cool (but not too cold), dark place. Even if you think you will get rid of your leftovers, follow these tips to keep your paint in better condition so someone else can use it or recycle it.

Related Videos

[Autoplay next video](#)



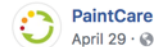
Store Right Tips
PaintCare



While Darwin Sle...
paul bush



Happy Halloween...
PaintCare



April 29 · 🌐

So you've gotten rid of your leftover house paint, but you're not sure what to do with the empty cans? Try these DIY ideas from [This Old House](#): <http://bit.ly/2oMhbs6>



10 Uses for Paint Cans

New or used, these pails have a variety of uses around the house

THISOLDHOUSE.COM

[Like](#)

[Comment](#)

[Share](#)



2020 Year in Progress

- Impact of COVID-19 on program collections felt in April, May after record 1Q 2020
- Absence of HHW events in Metro region, retail stores/Metro HHW facilities still available
- PaintCare's events postponed to summer/fall, plans to resume with distancing in mind



10 Years of Stewardship

- Oregon was the first PaintCare program, pilot started in 2010
- Reuse: OR has more reuse store sites than any other state (6% of program volume)
- LVP program has grown to include recurring pick-up sites (4% of program volume)
- Events have led to permanent sites in rural areas



PaintCare Program Results

- **9 Programs** (California, Colorado, Connecticut, DC, Maine, Minnesota, Oregon, Rhode Island, Vermont)
- **37 million** gallons of paint collected
- **1758** year-round drop-off sites (1360 retail)
- **4755** events (4439 HHW, 201 PaintCare, 115 Other)
- **3531** large volume pickups

Reuse in Oregon



Reuse at events, 2019



From 9 stores in 2011 to 26 in 2019

Large Volume Pickup

- 100 gallon minimum, appointment-based service
- Win-win for retailers and the public
- Keeps larger customers happy, conserves bin space for all
- Persistent needs? Become an RLVP
- Reuse opportunity offered at time of appointment



Events to Year-Round Sites



Enterprise, 2011-2017



Lakeview, 2011-2018





Jeremy Jones



415-590-0259



jjones@paint.org