

## Point of Sale Materials and Signage



**Point of sale materials** are available at no charge to drop-off sites, retailers, or anyone who would like to distribute them.

To order, fill out the form at [www.paintcare.org/order-print-materials/](http://www.paintcare.org/order-print-materials/), call (855) PAINT09, or contact your PaintCare representative.

### PaintCare Brochure with Holder

Size: 11x8.5"; folded, sets of 25  
Language: Multiple languages available


The PaintCare program brochure includes general information about PaintCare, a fee chart, and PaintCare accepted and uaccepted product lists. A holder with a printed insert can be ordered to display on retail counters. Languages available include Arabic, Armenian, Bengali, Cantonese, Mandarin, English, Farsi, French, Haitian Creole, Hawaiian, Hmong, Italian, Japanese, Khmer, Korean, Lao, Polish, Portuguese, Russian, Somali, Spanish, Tagalog, Thai, Turkish, Ukrainian, Vietnamese, Yiddish.



## In-Store Poster

Size: 8.5x11" printed on cardstock with or without an easel back

Posters are for use in store paint departments or near the check-out counter to explain the PaintCare program and fee structure to consumers. The poster includes general information about PaintCare, a fee chart, and PaintCare accepted and unaccepted product lists.



### About the Paint Recycling Program

Paint manufacturers created PaintCare, a nonprofit organization, to provide convenient places for households and businesses to recycle leftover paint. PaintCare sets up paint drop-off sites throughout states that pass paint stewardship laws.

#### PAINTCARE PRODUCTS

These products have a fee when you buy them and are accepted for drop-off at no additional cost:

- Interior and exterior architectural paints: latex, acrylic, water-based, alkyd, oil-based, enamel (including textured coatings)
- Deck coatings, floor paints (including elastomeric)
- Primers, sealers, undercoaters
- Stains
- Shellacs, lacquers, varnishes, urethanes (single component)
- Waterproofing concrete/masonry/wood sealers and repellents (not tar or bitumen-based)
- Metal coatings, rust preventatives
- Field and lawn paints

*Leaking, unlabeled, and empty containers are not accepted at drop-off sites.*

#### NON-PAINTCARE PRODUCTS


- Paint thinners, mineral spirits, solvents
- Aerosol paints (spray cans)
- Auto and marine paints
- Art and craft paints
- Caulk, epoxies, glues, adhesives
- Paint additives, colorants, tints, resins
- Wood preservatives (containing pesticides)
- Roof patch and repair
- Asphalt, tar, and bitumen-based products
- 2-component coatings
- Deck cleaners
- Traffic and road marking paints
- Industrial Maintenance (IM) coatings
- Original Equipment Manufacturer (OEM) (shop application) paints and finishes

#### PAINTCARE FEE

The PaintCare fee is applied to the purchase price of architectural paint as required by law. The fee funds collection, transportation, and processing costs. The fee is based on container size as follows:

\$0.00	Half pint or smaller
\$0.35	Larger than half pint up to smaller than 1 gallon
\$0.75	1 gallon
\$1.60	Larger than 1 gallon up to 5 gallons

For more information or to find a place to take your unwanted paint for recycling, please ask for the PaintCare brochure, visit [paintcare.org](http://paintcare.org), or call (855) PAINT09.



XX PIEN 0421

## Mini Card

Size: 3.5x4.5" cardstock; sets of 25  
Language: English, Spanish, and Mandarin

Mini Cards provide a convenient way to refer people to the PaintCare website to find a drop-off location, and are a good alternative to handing out brochures for those who don't need all the details.



### It's easy to recycle your leftover paint, stain, and varnish.

Find a drop-off site near you:  
(855) PAINT09 | [paintcare.org](http://paintcare.org)



### Paint Smarter

Scan the code above with your smart phone or visit [paintcare.org/paint-smarter](http://paintcare.org/paint-smarter) to get tips on how to buy the right amount of paint, use up what's left, and recycle the rest with PaintCare.

*A nonprofit organization created by paint manufacturers, PaintCare is committed to making it easy and convenient to recycle leftover paint in states with paint stewardship laws.*

xx moen 0522

## Counter Mat and Insert

Size: 19x13" (window 8.5x11")

The counter mat is intended for use in retail paint departments or on the check-out counter to help explain the PaintCare program and fee to customers. A replaceable insert is included in a window on the right-hand side.

### Recycle with PaintCare!

**Buy Right:** Consult with painting professionals and retailers to buy the right amount of paint and reduce potential waste.

**Use It Up:** Use up leftover paint on the surface you are painting, on additional painting projects around the house, or give it to someone else in your community.

**Recycle the Rest:** When you can't use up leftover paint, drop it off with PaintCare to get it recycled!

Visit [www.paintcare.org](http://www.paintcare.org) to find a year-round paint drop-off site near you or schedule a large volume pickup.



XX CARN 0521

#### What types of paint products can be recycled with PaintCare?

##### PAINTCARE PRODUCTS

The following are products included in the program. When purchased, the PaintCare fee is applied. These products are accepted at no additional cost when dropped off at PaintCare's participating drop-off sites.

- Interior and exterior architectural paints: latex, acrylic, water-based, alkyd, oil-based
- Deck coatings, floor paints (including textured coatings)
- Primers, sealers, undercoaters
- Stains
- Shellacs, lacquers, varnishes, urethanes (single component)
- Waterproofing concrete/masonry/wood sealers and repellents (not tar or bitumen-based)
- Metal coatings, rust preventatives
- Field and lawn paints

##### NON-PAINTCARE PRODUCTS

The following are non-PaintCare products and are not included in the program. When purchased, the PaintCare fee is not applied. They are not accepted at PaintCare's participating drop-off sites.

- Paint thinners, mineral spirits, solvents
- Aerosol paints (spray cans)
- Auto and marine paints
- Art and craft paints
- Caulk, epoxies, glues, adhesives
- Paint additives, colorants, tints, resins
- Wood preservatives (containing pesticides)
- Roof patch and repair
- Asphalt, tar, and bitumen-based products
- 2-component coatings
- Deck cleaners
- Traffic and road marking paints
- Industrial Maintenance (IM) coatings
- Original Equipment Manufacturer (OEM) (shop application) paints and finishes
- Containers that are leaking or empty, and containers without the original printed manufacturer's label are not accepted at retail drop-off sites.

##### PROGRAM FUNDING

The PaintCare fee is applied to the purchase price of architectural paint sold in your state as required by law. The fee is based on container size:

Half pint or smaller	\$0.00
Larger than half pint up to smaller than 1 gallon	\$0.35
1 gallon	\$0.75
Larger than 1 gallon up to 5 gallons	\$1.60

XX CARN 0521

## Vinyl Window Decal

Size: 11x17" or 8.5x11"; 6x6"

The double-sided vinyl decals promote the location as a drop-off site. The larger versions provide a short list of accepted and unaccepted products, advise readers to see staff for assistance, and come with an optional "No Dumping" extension.

### Recycle Paint at This Store



**PAINTCARE PRODUCTS**  
Paint must be in sealed, original container with original manufacturer label.

- House paint and primers (latex or oil-based)
- Stains
- Deck and concrete sealers
- Clear finishes (e.g., varnishes, shellac)

**NON-PAINTCARE PRODUCTS**

- No leaking, unlabeled, or empty containers
- No aerosol spray paints
- No drums or containers larger than 5 gallons
- We cannot accept other hazardous waste or chemicals such as paint thinner, solvents, motor oil, spackle, glue, adhesive, roofing tar, pesticides, cleaning chemicals

Paint is accepted during business hours only. Staff will check all products before accepting.

For a complete list of PaintCare Products, please ask for the PaintCare brochure, visit [www.paintcare.org](http://www.paintcare.org), or call (855) PAINT09.



PAINTCARE  
RECYCLING MADE EASY

XX-00000-0001

### Recycle Paint at This Store



Ask us for details



PAINTCARE  
RECYCLING MADE EASY

XX-00000-0001

## Realtor Card

Size: 8.5x3.5"

Realtor cards can be provided to realtors to distribute to their clients (both buyers and sellers) to promote awareness of the PaintCare program and where to find a drop-off site.



### Buying or selling a home? We'll make it paintless.

Whether you have paint leftover from selling your home or found a closet full of touch up paint in your new one, PaintCare can help you responsibly dispose of it for free. There are **more than 2,000 PaintCare sites** in California, Colorado, Connecticut, the District of Columbia, Maine, Minnesota, Oregon, Rhode Island, Vermont, and Washington where you can recycle unwanted paint, stain, and varnish all year long.

Learn how PaintCare can help buyers and sellers:  
[paintcare.org/New-Home](http://paintcare.org/New-Home)  
(855) PAINT09

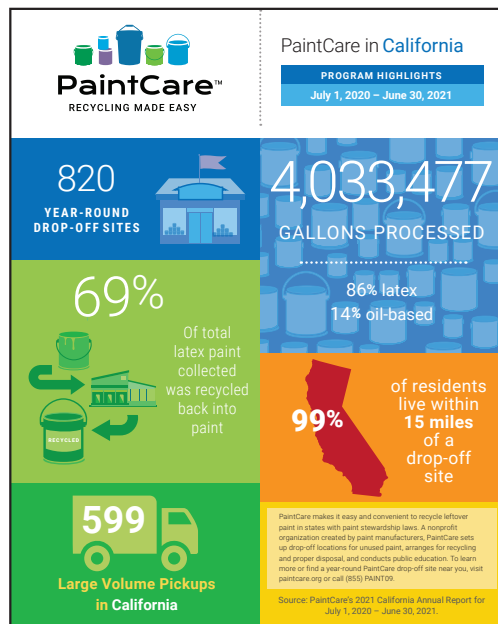


PAINTCARE  
RECYCLING MADE EASY

## Annual Report Infographic

Size: 8.5x11"

This state-specific document highlights the state program's most recent annual report statistics.





# General Booklet

Size: 8x8"

The General Booklet contains a broad, national overview of PaintCare. The booklet is updated one to two times per year with current data highlights. Not available on the online order form.



## Fact Sheets

Size: 8.5x11", some are double-sided  
Language: English, fact sheets labeled with an asterisk are available in additional languages listed below

The Point of Sale Fact Sheets are handed out by retailers to their customers.

- **Large Volume Pickup\***: Explains PaintCare's free pickup service for customers with 100+ gallons of paint.
- **Painting Contractor\***: Details the benefits of PaintCare for painting contractors.
- **Program Products\***: Lists accepted and unaccepted products.

Your PaintCare representative can also provide fact sheets that are useful for drop-off site or retail staff members that wish to know more about the PaintCare program.

- Become a Retail Drop-Off Site for Paint
- About the PaintCare Fee\*
- Mistints, Damaged, Spoiled, and Obsolete Paint
- Outreach Benefits for Drop-off Sites
- PaintCare and Reuse Stores

\*Arabic, Armenian, Bengali, Cantonese, Mandarin, Farsi, French, Haitian Creole, Hawaiian, Hmong, Italian, Japanese, Khmer, Korean, Lao, Polish, Portuguese, Russian, Somali, Spanish, Tagalog, Thai, Turkish, Ukrainian, Vietnamese, Yiddish

PAINT STEWARDSHIP LAWS IN THE U.S.

**Information for Painting Contractors**

Updated — May 2022

**How do paint stewardship laws affect painting contractors?**

**PaintCare**

PaintCare is a nonprofit organization established by the American Coatings Association to implement manufacturer-led paint stewardship programs in states that pass paint stewardship laws. PaintCare currently operates programs in California, Colorado, Connecticut, District of Columbia, Maine, Minnesota, New York, Oregon, Rhode Island, Vermont, and Washington.

**Paint Drop-Off Sites**

The primary requirement of paint stewardship laws is for paint manufacturers to set up paint drop-off sites at retailers and other locations where households and businesses can take postconsumer (leftover) architectural paint, free of charge. Most drop-off sites are paint and hardware stores; others are waste transfer stations, recycling centers, landfills, and household hazardous waste (HHW) facilities. Participation as a drop-off site is voluntary. There are more than 2,000 drop-off sites across all PaintCare programs. To find a drop-off location, visit [www.paintcare.org](http://www.paintcare.org).

**Fee and Funding**

As required by laws in PaintCare jurisdictions, the program is funded by a fee (known as the PaintCare fee) that must be added by manufacturers to the wholesale price of all architectural paint sold in the state, including paint sold in stores and online. This fee is paid by manufacturers to PaintCare to fund program operations including paint collection and recycling, consumer education, and program administration. Displaying the fee on receipts is optional for retailers; however, PaintCare encourages retailers to show the fee to inform consumers about the program. **(See reverse for complete listing of fees by state.)**

**Recommendations for Contractors**

**Preparing Estimates**

When estimating jobs, contractors should take the PaintCare fee into account by checking with suppliers to make sure their quotes for paint products include the fee.

**What Products are Covered?**

Updated — November 2021

**PaintCare Products**

**These products have a fee when purchased and are accepted for free at drop-off sites:**

- Interior and exterior architectural paints: latex, acrylic, water-based, alkyd, oil-based, enamel (including textured coatings)
- Deck coatings, floor paints (including elastomeric)
- Primers, sealers, undercoats
- Stains
- Shellacs, lacquers, varnishes, urethanes (single component)
- Waterproofing concrete/masonry/wood sealers and repellents (not tar or bitumen-based)
- Metal coatings, rust preventatives
- Field and lawn paints

**Non-PaintCare Products**

**These products do not have a fee when purchased and are not accepted at drop-off sites:**

- Paint thinners, mineral spirits, solvents
- Aerosol paints (spray cans)
- Auto and marine paints
- Art and craft paints
- Caulking compounds, epoxies, glues, adhesives
- Paint additives, colorants, tints, resins
- Wood preservatives (containing pesticides)
- Roof patch and repair
- Asphalt, tar and bitumen-based products
- 2-component coatings
- Deck cleaners
- Traffic and road marking paints
- Industrial Maintenance (IM) coatings
- Original Equipment Manufacturer (OEM) (shop application) paints and finishes

Note: Containers that are leaking, empty, or without the original printed manufacturer's label are not accepted at drop-off sites.

901 NEW YORK AVE NW    WASHINGTON, DC 20001    (855) PAINT09    [www.paintcare.org](http://www.paintcare.org)    [info@paint.org](mailto:info@paint.org)

XX-FSPEN-1121

PAINT STEWARDSHIP PROGRAMS IN THE U.S.

**Large Volume Pickup (LVP) Service**

Updated — May 2022

**PaintCare offers a free pickup service to painting contractors, property managers, and others with large amounts of leftover architectural paint.**

**Who is PaintCare?**

PaintCare is a nonprofit organization established by the American Coatings Association to operate paint stewardship programs on behalf of paint manufacturers in states that pass paint stewardship laws.

In states with a paint stewardship program (see [www.paintcare.org/states](http://www.paintcare.org/states)), PaintCare's primary effort is to set up conveniently located drop-off sites—places where households and businesses may take their unwanted paint for no charge. Sites set their own limits on the volume of paint they accept from customers per visit, usually from 5 to 20 gallons. To find a drop-off site near you, visit [www.paintcare.org/drop-off-sites](http://www.paintcare.org/drop-off-sites) or call (855) PAINT09.

**Large Volume Pickups**

In states where PaintCare operates a paint stewardship program, those who have accumulated a large volume of paint may be eligible for PaintCare's large volume pickup service (LVP). Large volume means 100 or more gallons, measured by container size, not liquid volume. On a case-by-case basis, PaintCare may approve a pickup for less than 100 gallons. After two or three pickups, you may be switched to a repeat pickup service (see next page).

**Drums and Bulk Paint Are Not Accepted**

PaintCare only accepts paint in containers that are 5 gallons or smaller in size. Leave paint in original cans with original labels; do not combine or bulk paint from small cans into larger ones. If you have unwanted paint in drums or containers larger than 5 gallons, please contact a paint recycling company or a hazardous waste transportation company to assist you.

**Scheduling**

After reviewing your form, PaintCare staff will either approve your site for a pickup or inform you of the best place to take your paint if you do not meet the requirements. If approved, you will be put in contact with our licensed hauler to schedule a pickup. It may be several weeks before your pickup occurs.

**On the Day of Your Pickup**

Sort your products into the two categories as noted above and store them in an area that has easy access for the hauler. If the paint is far from where the hauler parks, the path between should be at least four feet wide to accommodate movement of the paint collection bins.

A photograph showing a person in a white shirt and dark pants loading a large metal collection bin with paint cans. The person is standing next to a white van, and the bin is being placed into the back of the van. The background is a plain, light-colored wall.



## Signs are available at no charge to PaintCare drop-off sites.

To order, contact your PaintCare representative.

### PaintCare Products Sign

Size: 12x18" or 24x36"

Language: English and Bilingual  
(English/Spanish)

Purpose: For all drop-off sites

Used as a training tool (not a public information tool) for drop-off site staff to place in their sorting area as a reminder of which products are acceptable to put into their PaintCare bins. It can be provided to paint retailers, HHWs, transfer stations, and large-volume users.



The sign features the PaintCare logo at the top, which includes icons of paint cans and the text "PaintCare™ RECYCLING MADE EASY". Below the logo, the title "PaintCare Products" is followed by a list of accepted products: interior and exterior architectural paints, deck coatings, primers, stains, shellacs, waterproofering, metal coatings, and field/lawn paints. A section for "Non-PaintCare Products" lists items not accepted, such as thinners, aerosols, and adhesives. The sign concludes with contact information for more details.

**PaintCare™**  
RECYCLING MADE EASY

✓ **PaintCare Products**

*These products have a fee when you buy them and are accepted for drop-off at no additional cost:*

- Interior and exterior architectural paints: latex, acrylic, water-based, alkyd, oil-based, enamel (including textured coatings)
- Deck coatings, floor paints (including elastomeric)
- Primers, sealers, undercoaters
- Stains
- Shellacs, lacquers, varnishes, urethanes (single component)
- Waterproofing concrete/masonry/wood sealers and repellents (not tar or bitumen-based)
- Metal coatings, rust preventatives
- Field and lawn paints

Products must be in original containers with original labels.  
Latex paint that is dried out and "rock hard" is also acceptable.

✗ **Non-PaintCare Products**

*These products do not have a fee when purchased and are not accepted at drop-off sites:*

- Paint thinners, mineral spirits, solvents
- Aerosol paints (spray cans)
- Auto and marine paints
- Arts and crafts paints
- Caulk, epoxies, glues, adhesives
- Paint additives, colorants, tints, resins
- Wood preservatives (containing pesticides)
- Roof patch and repair
- Asphalt, tar, and bitumen-based products
- 2-component coatings
- Deck cleaners
- Traffic and road marking paints
- Industrial Maintenance (IM) coatings
- Original Equipment Manufacturer (OEM) (shop application) paints and finishes

Leaking, unlabeled, and empty containers are not accepted at drop-off sites.

To learn more, please call (855) PAINT09 or visit [www.paintcare.org](http://www.paintcare.org)

XX-PPSM-0521

### Program Partner Sign

Size: 12x18" or 24x36"

Purpose: For all drop-off sites

This sign helps sites explain that the PaintCare fee supports the paint recycling program and that this site is a partner.



The sign features the PaintCare logo at the top. The main heading "We are a PaintCare Partner" is prominently displayed. Below this, a paragraph explains that the paint recycling fee in California funds the program. The sign includes an illustration of various paint cans and provides contact information for more details.

**PaintCare™**  
RECYCLING MADE EASY

**We are a PaintCare Partner**

The fee on the sale of paint in California funds our program.

**Recycle with PaintCare**

To learn more, visit [paintcare.org](http://paintcare.org) or call (855) PAINT09.

## Accepted/Not Accepted Sign

Size: 12x18" or 24x36"

Language: English and Bilingual  
(English/Spanish)

Purpose: Only for retail drop-off sites and transfer stations

Informs the public about acceptable and unacceptable products. It is a simpler version of the PaintCare Products sign to be used as a reference by staff. It can be used for retailers or transfer stations who might want a sign in the paint drop-off area of their facility.



### We're a PaintCare Drop-Off Site for Leftover Paint

**✓ WE ACCEPT**

- Latex paints (acrylic, water-based)
- Oil-based paints (alkyd)
- Stains
- Primer and undercoaters
- Shellacs, lacquers, varnishes, urethanes
- Sealers and waterproofing coatings for wood, concrete, and masonry
- Metal coatings, rust preventatives
- Field and lawn paints

**✗ WE DO NOT ACCEPT**

- Aerosol paint (spray cans)
- Auto and marine paints
- 2-component coatings
- Road marking paint
- Industrial paint
- Tints and resins
- Paint thinner and solvent
- Caulk and spackle
- Wood treatment/preservative
- Deck cleaner
- Tar and asphalt products

**CONTAINERS**

- No larger than 5 gallons
- Must have original labels
- Must not be leaking
- Must have secure lids
- No empty containers



### We're a PaintCare Drop-off Site for Leftover Paint

**✓ WE ACCEPT**

- Latex paints (acrylic, water-based)
- Oil-based paints (alkyd)
- Stains
- Primer and undercoaters
- Shellacs, lacquers, varnishes, urethanes
- Sealers and waterproofing coatings for wood, concrete, and masonry
- Metal coatings, rust preventatives
- Field and lawn paints

**✗ WE DO NOT ACCEPT**

- Aerosol paint (spray cans)
- Auto and marine paints
- 2-component coatings
- Road marking paint
- Industrial paint
- Tints and resins
- Paint thinner and solvent
- Caulk and spackle
- Wood treatment/preservatives
- Deck cleaner
- Tar and asphalt products

**CONTAINERS**

- No larger than 5 gallons
- Must have original labels
- Must not be leaking
- Must have secure lids
- No empty containers

### Somos un centro de entrega de PaintCare para pintura sobrante

**✓ ACEPTAMOS**

- Pinturas látex (acrílicas, a base de agua)
- Pinturas a base de aceite (alquídicas)
- Tinturas
- Imprimadores y capas base
- Goma laca, laca, barnices, uretanos
- Selladores y revestimientos a prueba de agua para madera, concreto y mampostería
- Revestimientos de metal, prevención de óxido
- Pinturas para el campo y césped

**✗ NO ACEPTAMOS**

- Pinturas en aerosol (latas de aerosol)
- Pinturas para autos y embarcaciones
- Revestimientos de componente doble
- Pinturas para señalización vial
- Pinturas industriales
- Tintes y resinas
- Diluyentes y solventes de pintura
- Masilla y corrector de yeso
- Tratamiento/preservativos de madera
- Limpiadores de terrazas
- Productos de alquitrán y asfalto

**ENVASES**

- No mayores de 5 galones
- Deben tener las etiquetas originales
- No deben tener escapes
- Deben tener tapas seguras
- No envases vacíos

## Reuse Sign

Size: 12x18" or 24x36"

Purpose: Only for sites with reuse contracts

This sign is available for sites who want to make customers aware of the reuse area at their facility.

## NOW AVAILABLE



### FREE Leftover Paint

Visit Our Reuse Area  
or Ask for Assistance



## No Dumping Sign

Size: 12x18" or 24x36"

Language: English, Spanish, Bilingual  
(English/Spanish)

Purpose: Only for retail drop-off sites

To deter dumping of non-program  
products.

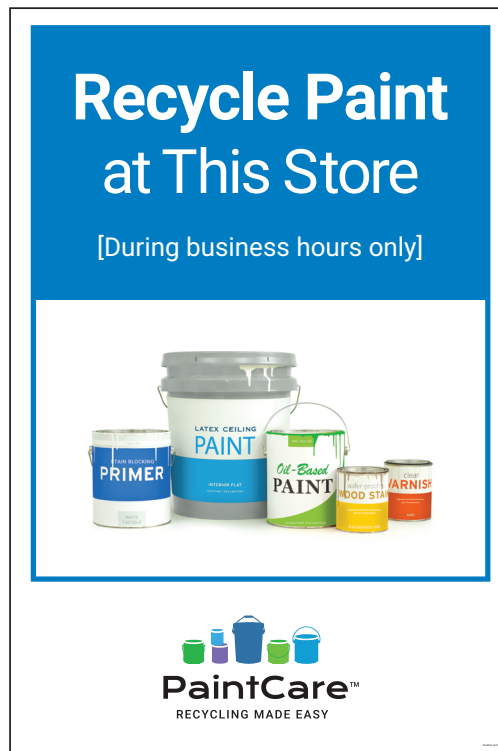


## Perforated Window Decal

Size: 24x36" (Product List extension:  
24x18"); one-sided

Purpose: Only for retail drop-off sites

This single-sided, perforated window  
decal promotes the location as a drop-off  
site. An optional Products List extension  
can be placed at the bottom of the decal.  
The material is perforated so it is only  
visible when looking into the store from  
outside and is see through from inside the  
store.



<p>✓ <b>PAINTCARE PRODUCTS</b> <i>Paint must be in sealed, original container with original manufacturer label.</i></p> <ul style="list-style-type: none"><li>• House paint and primers (latex or oil-based)</li><li>• Stains</li><li>• Deck and concrete sealers</li><li>• Clear finishes (e.g., varnishes, shellac)</li></ul>	<p>✗ <b>NON-PAINTCARE PRODUCTS</b></p> <ul style="list-style-type: none"><li>• No leaking, unlabeled, or empty containers</li><li>• No aerosol spray paints</li><li>• No drums or containers larger than 5 gallons</li><li>• We cannot accept other hazardous waste or chemicals such as paint thinner, solvents, motor oil, spackle, glue, adhesive, roofing tar, pesticides, cleaning chemicals</li></ul>
---	---



## Wait for Assistance Sign

Size: 18x24" with or without frame

Language: English or Bilingual  
(English/Spanish)

Purpose: Only for retail drop-off sites

This sign instructs the public to wait for staff assistance before placing paint in bins, preventing unwanted products from being dumped. It can be ordered for retailers and transfer stations. This sign normally requires an A-frame, but it can be requested without one.



PaintCare is committed to procuring sustainable materials wherever possible by looking for materials that are recyclable, reusable and long lasting, or made from recycled components.

Once ordered (by online form, phone, or through your PaintCare representative), items are normally shipped within 5-10 days. Shipping times may vary depending on carrier capacities. We will do everything we can to fulfill orders in a timely manner. Orders that include large quantities may take longer to fulfill.

